

Stainless Steel Pull Handles

PH01X

Single Pull Handle



Application:

- Suitable for use on wooden doors
- Available in 4 handle lengths
- Bolt-through fixing

Specification:

- Manufactured from Grade 304 steel
- Handle Diameter: 19mm
- Handle Length: 150, 225, 300 and 425mm
- Available in SS finish as standard

Finish:

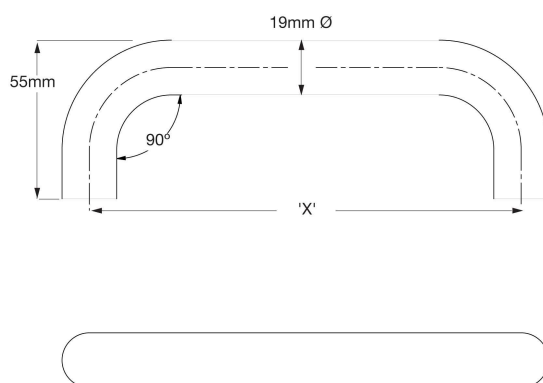
- SS - Satin Stainless Steel

Standards:

- BS EN 1634 Part 1 : 2000 assessed for use on 60 minutes timber fire doors
- Corrosion testing – 96 hours –EN 1670 Grade 3



Technical Design:



Product Code	'X'
PH01X150	150mm
PH01X225	225mm
PH01X300	300mm
PH01X425	425mm

Variants:

Code	Description
J-PH01X150SS	01 PLL HAND 19X150MM SSS
J-PH01X225SS	01 PULL HANDLE 19X225MM SSS
J-PH01X300SS	01 PULL HANDLE 19X300MM SSS
J-PH01X425SS	BOLT FIX 19MM PULL HANDLE SSS